

**GENERIC INSTALLATION - SCOPE OF WORK BY BUILDER**

- SEWER DRAINAGE CONNECTION TO WASTEWATER COLLECTION TANK
- SELECT PUMP CONTROL PANEL LOCATION
- POWER SUPPLY FROM ELECTRICAL DISTRIBUTION BOX TO CONTROL PANEL LOCATION VIA GENERAL POWER OUTLET IN ELECTRICAL DISTRIBUTION BOX
- ELECTRICAL CONDUIT FROM CONTROL PANEL LOCATION TO COLLECTION PUMP UNIT

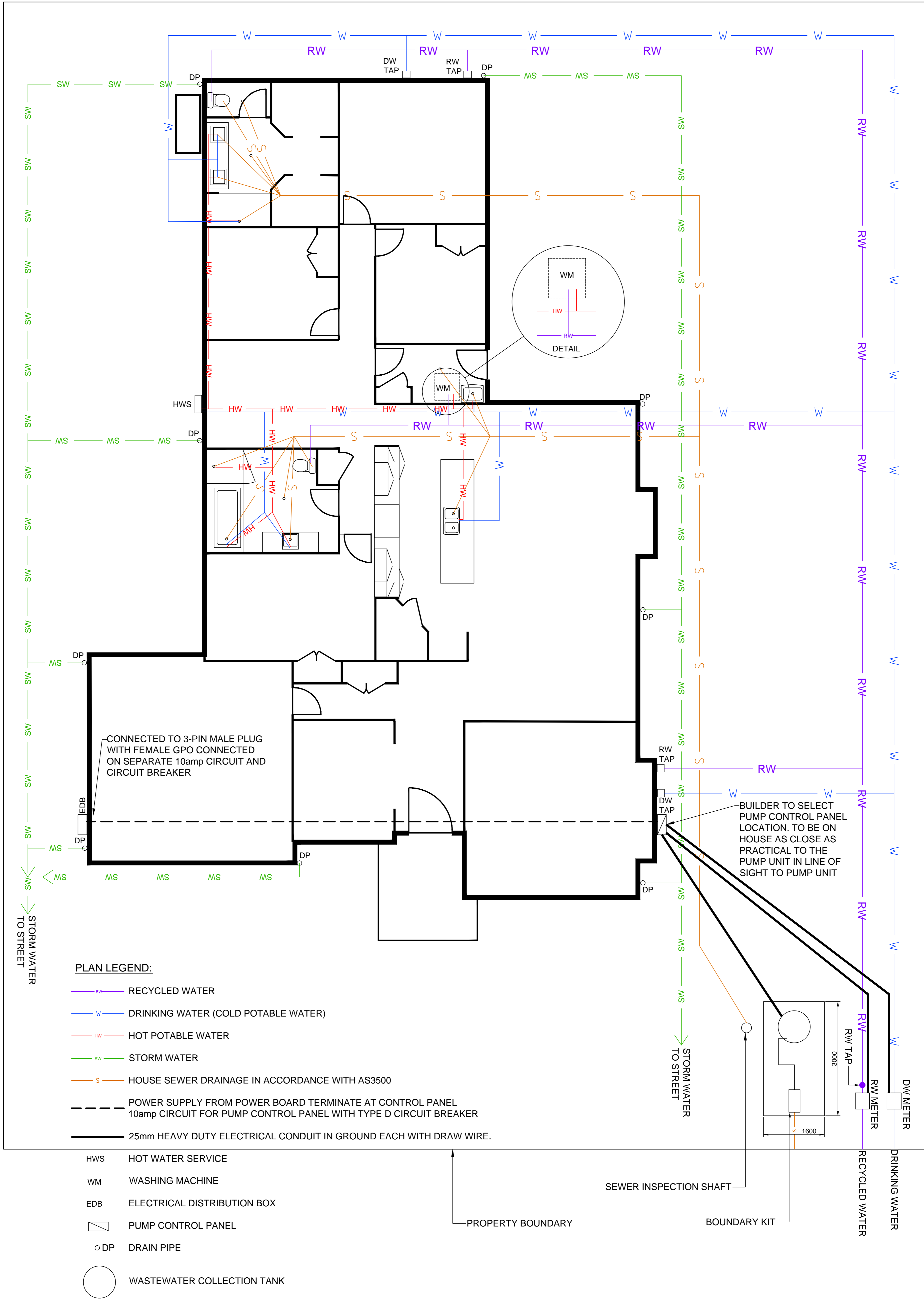
NOTE: WASTEWATER COLLECTION TANK MUST REMAIN CLEAN AND EMPTY. NO WASTEWATER, BUILDERS WASTE OR OTHER MATERIAL TO ENTER THE WASTEWATER COLLECTION TANK. PUMP WILL NOT BE INSTALLED AND BUILDER WILL BE REQUIRED TO CLEAN OUT WASTEWATER COLLECTION TANK IF NOT CLEAN AND EMPTY.

**NOTE:**

THIS DIAGRAM SHOWS THE LOCATION OF THE PRESSURE SEWER SYSTEM ('PSS') ON THE PROPERTY. THE AREA IDENTIFIED BELOW (ROUGHLY 3m X 1.6m) MUST NOT BE ENCROACHED UPON BY HOME OWNERS. THE PSS IS THE PROPERTY OF THE LICENSED UTILITY AUTHORISED TO PROVIDE SEWAGE COLLECTION, RECYCLED WATER SUPPLY AND DRINKING WATER SERVICES TO THE PROPERTY. HOME OWNERS MUST GIVE THIS UTILITY (OR ANY OF ITS AUTHORISED PERSONNEL) COMPLETE AND UNFETTERED ACCESS TO THE SYSTEM FOR THE PURPOSES OF ROUTINE MAINTENANCE, REPAIR AND REPLACEMENT WHERE NECESSARY.

**NOTE:**

- ALL ELECTRICAL WORK TO BE IN ACCORDANCE WITH AS3000.
- ALL PLUMBING WORK TO BE IN ACCORDANCE WITH AS3500.



**PLAN LEGEND:**

- RW RECYCLED WATER
- W DRINKING WATER (COLD POTABLE WATER)
- HW HOT POTABLE WATER
- SW STORM WATER
- S HOUSE SEWER DRAINAGE IN ACCORDANCE WITH AS3500
- POWER SUPPLY FROM POWER BOARD TERMINATE AT CONTROL PANEL 10amp CIRCUIT FOR PUMP CONTROL PANEL WITH TYPE D CIRCUIT BREAKER
- 25mm HEAVY DUTY ELECTRICAL CONDUIT IN GROUND EACH WITH DRAW WIRE.

- HWS HOT WATER SERVICE
- WM WASHING MACHINE
- EDB ELECTRICAL DISTRIBUTION BOX
- PUMP CONTROL PANEL
- DP DRAIN PIPE
- WASTEWATER COLLECTION TANK

SIZE A1	DESIGNED:	CK		DRG TITLE:	NOT TO SCALE	REV A
	DRAWN:	SR		WATER SERVICES DRAWING - EXAMPLE ONLY	DRG No. PSS-1004-FS	
REV	DATE	DESCRIPTION	BY	APPROVED		
A	13/08/15	NEW DRAWING	CK	WBG		